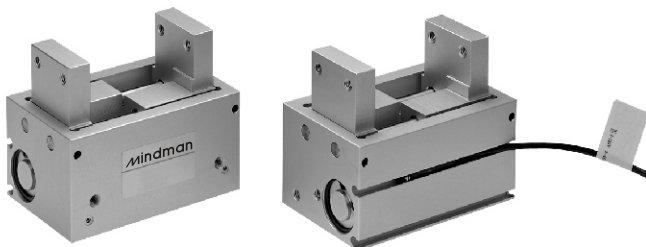


MCHU series

SLIM PARALLEL GRIPPERS



Features:

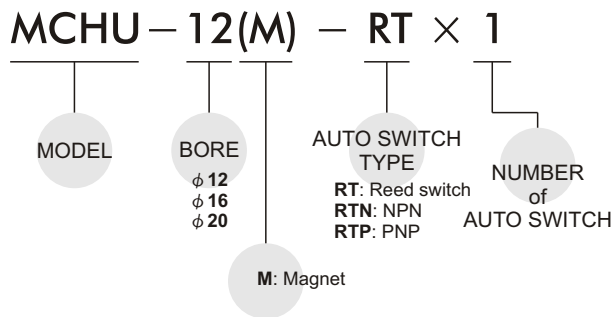
- Compact design for low weight and high reliability of long life.
- With resistant bush guide, however even fixing long attachments, they are moving smoothly.
- Auto switch with indicator lamp for reed switch and magneto-resistive (MR) sensor (NPN or PNP)

Specification:

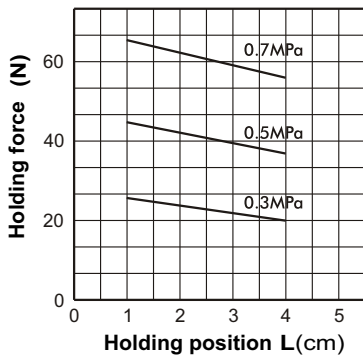
Model	MCHU-12	MCHU-16	MCHU-20
Acting type	Double acting		
Bore	12	16	20
Stroke	15	20	25
Fluid	Air 1~7.1 kgf/cm ²		
Ambient temperature	-5~+60°C (No freezing)		
Lubrication	Not required		
Repeatability	±0.03		
Gripping force	20~49	39~78	78~118
Weight(kg)	0.16	0.28	0.51

- Maintenance: Re-Lubrication after appr. 1.5 million cycles

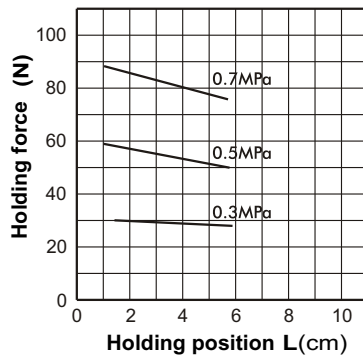
Order example:



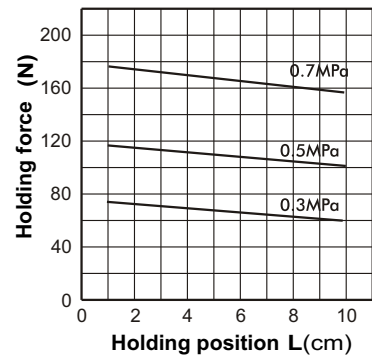
MCHU-12



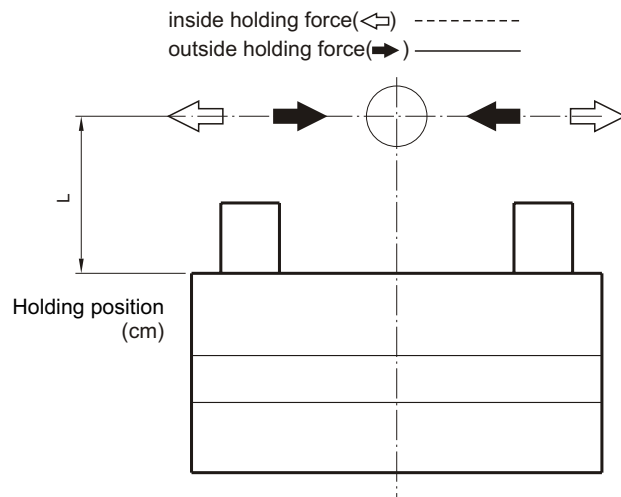
MCHU-16



MCHU-20

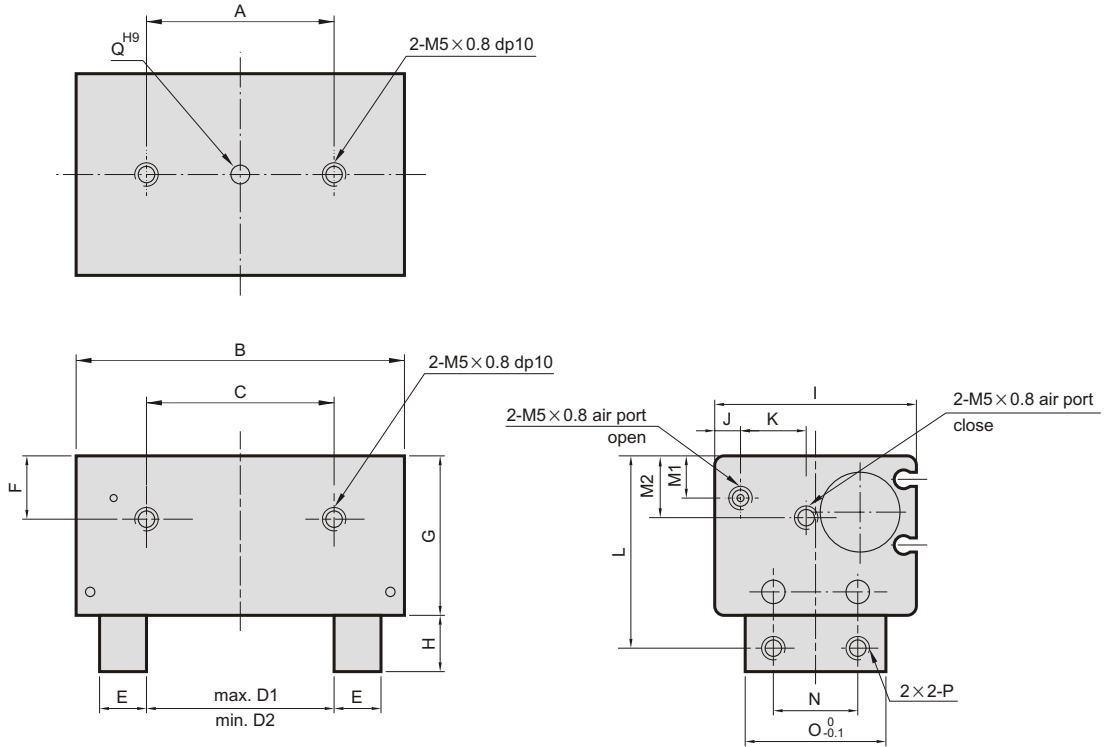


- With reference to the holding force, under the condition must be considered.
- Condition: friction coefficient, great acceleration impact is expected during work piece rotate.
- It recommend: select a type of arithmetic holding force that can produce 10 to 20 times for work piece weight.



MCHU Dimensions $\phi 12 \sim \phi 20$

SLIM PARALLEL GRIPPERS



Code Model	A	B	C	D1	D2	E	F	G	H	I	J	K	L	M1	M2	N	O ($\frac{0}{-0.1}$)	P	Q ^{H9}
$\phi 12$	30	54	30	30	15	6	12	29	10	38	6	10	35	6.5	9	14	22	M4 x 0.7	$\phi 2 \begin{smallmatrix} +0.025 \\ -0 \end{smallmatrix} \times 1.8 \text{ dp}$
$\phi 16$	40	70	40	40	20	10	13.5	34	12	43	7	12	41	7	10	18	30	M5 x 0.8	$\phi 3 \begin{smallmatrix} +0.025 \\ -0 \end{smallmatrix} \times 3 \text{ dp}$
$\phi 20$	60	82	60	50	25	10	15	43	22	56	11.5	12.5	59	10	20.5	20	35	M5 x 0.8	$\phi 3 \begin{smallmatrix} +0.025 \\ -0 \end{smallmatrix} \times 6 \text{ dp}$